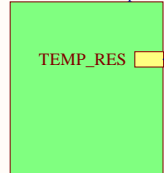


247-722-03 Temperature choice.SchDoc



TEMP\_REF

TP1  
T\_OK



R19  
2k

R20  
2k



TEMP\_OK

TEMP\_OUT

TP2

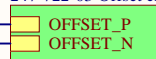
247-722-03 Window detector.SchDoc



VCC\_F  
VCC

OFFSET\_P  
OFFSET\_N

247-722-03 Offset choice.SchDoc



J4  
101R014FB110

V\_cooler



R21  
0R

V\_amp

C6  
100n/35V



FL1  
PA4339.132NLT

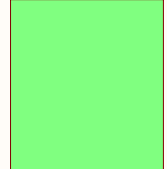
50Ohm

50Ohm

247-722-03 Amp.SchDoc



247-722-03 Sup.SchDoc



M5

M6

9774025243R

9774025243R

M1

M2

9774010943R

9774010943R

R22  
0R

R23  
0R

R24  
0R

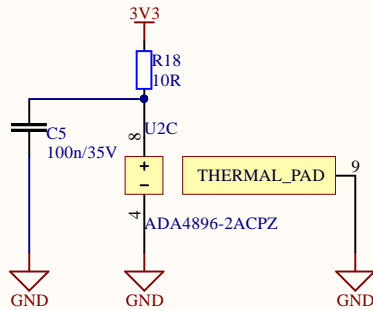
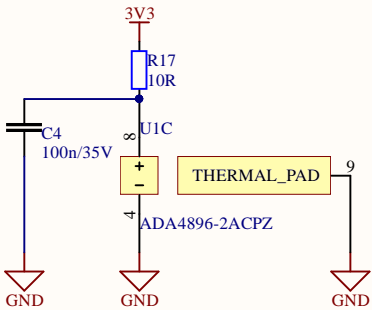
R25  
0R



|              |                          |                        |            |
|--------------|--------------------------|------------------------|------------|
| Title:       | MAIN                     |                        |            |
| Project:     | 247-722-03-public.PrjPcb |                        |            |
| Modified by: | Pawel Salek              | Date:                  | 04.01.2022 |
| Size:        | A4                       | 247-722-03 Main.SchDoc |            |

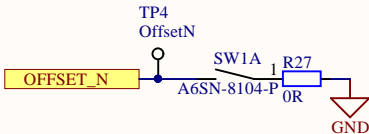
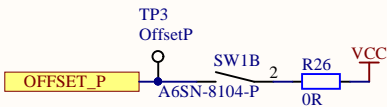






|              |    |                             |                  |
|--------------|----|-----------------------------|------------------|
| Title:       |    | Amplifier supply decoupling |                  |
| Project:     |    | 247-722-03-public.PrjPcb    |                  |
| Modified by: |    | Paweł Sałek                 | Date: 04.01.2022 |
| Size:        | A4 | 247-722-03 Amp_sup.SchDoc   |                  |





|                                   |                                 |
|-----------------------------------|---------------------------------|
| Title: Offset choice              |                                 |
| Project: 247-722-03-public.PrjPcb |                                 |
| Modified by: Paweł Sałek          | Date: 04.01.2022                |
| Size: A4                          | 247-722-03 Offset choice.SchDoc |



A

B

C

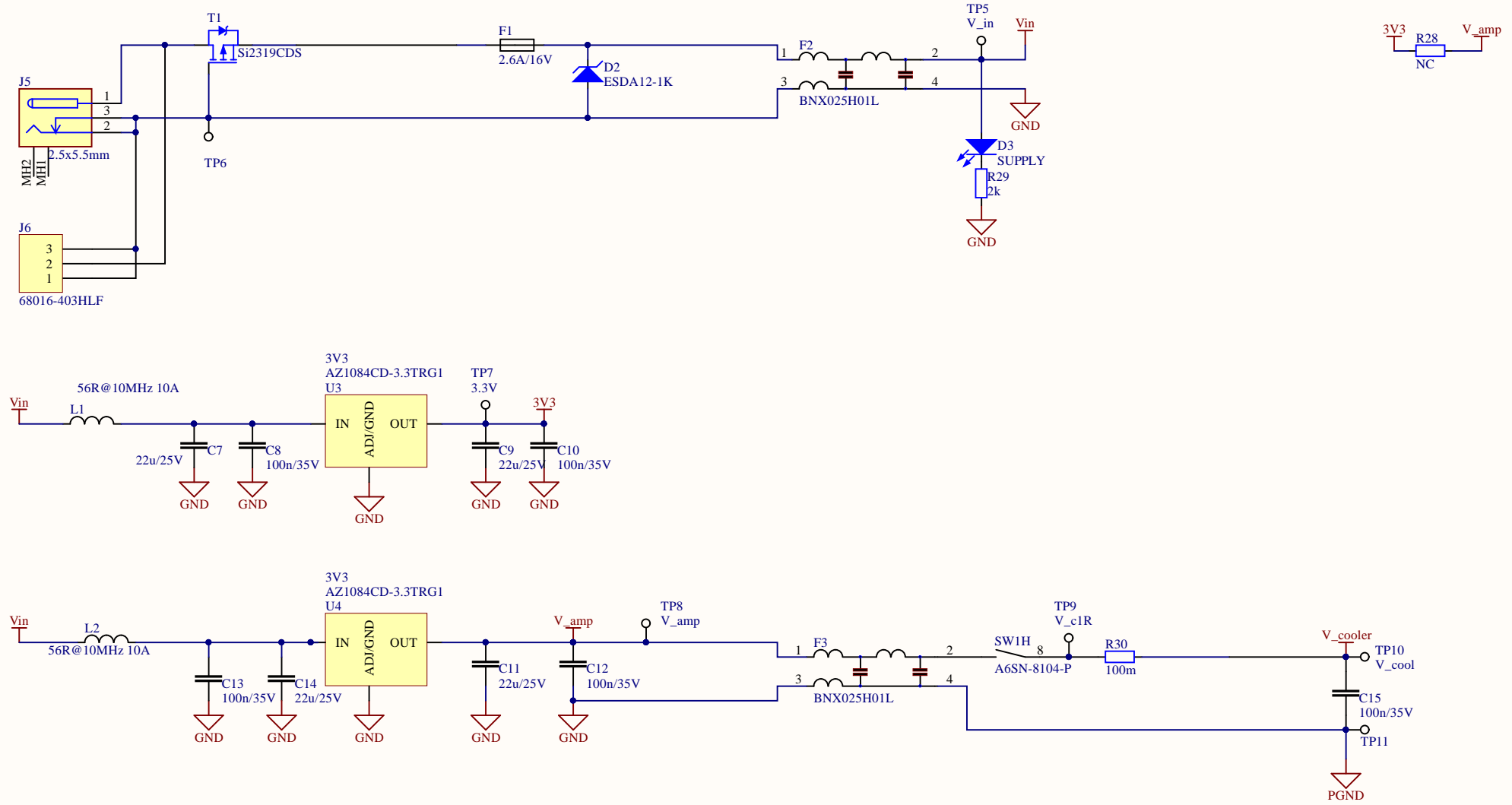
D

A

B

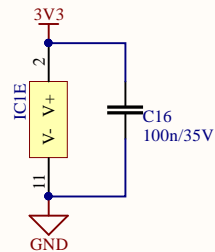
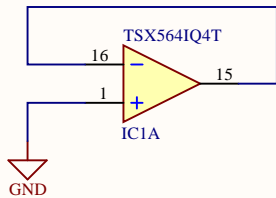
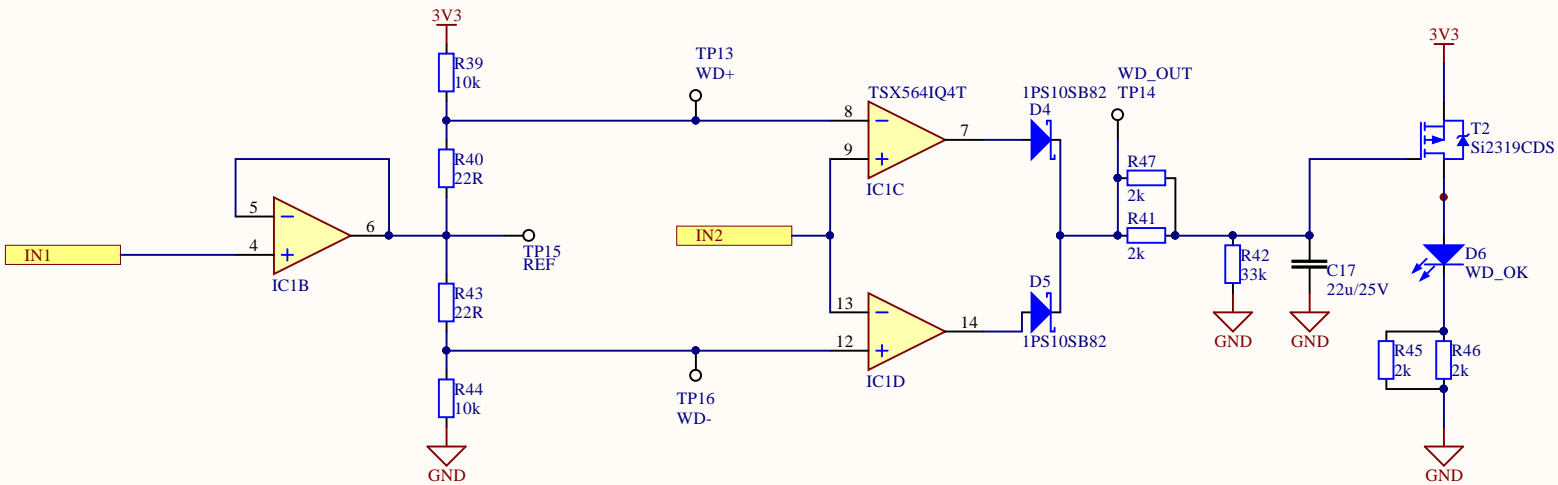
C

D

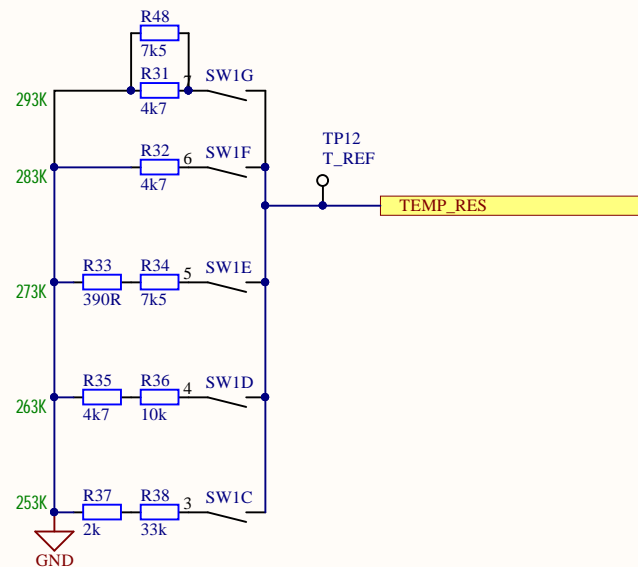


|              |                          |       |                       |
|--------------|--------------------------|-------|-----------------------|
| Title:       | Power Supply             |       |                       |
| Project:     | 247-722-03-public.PrjPcb |       |                       |
| Modified by: | Paweł Sałek              | Date: | 04.01.2022            |
| Size:        | A4                       |       | 247-722-03 Sup.SchDoc |



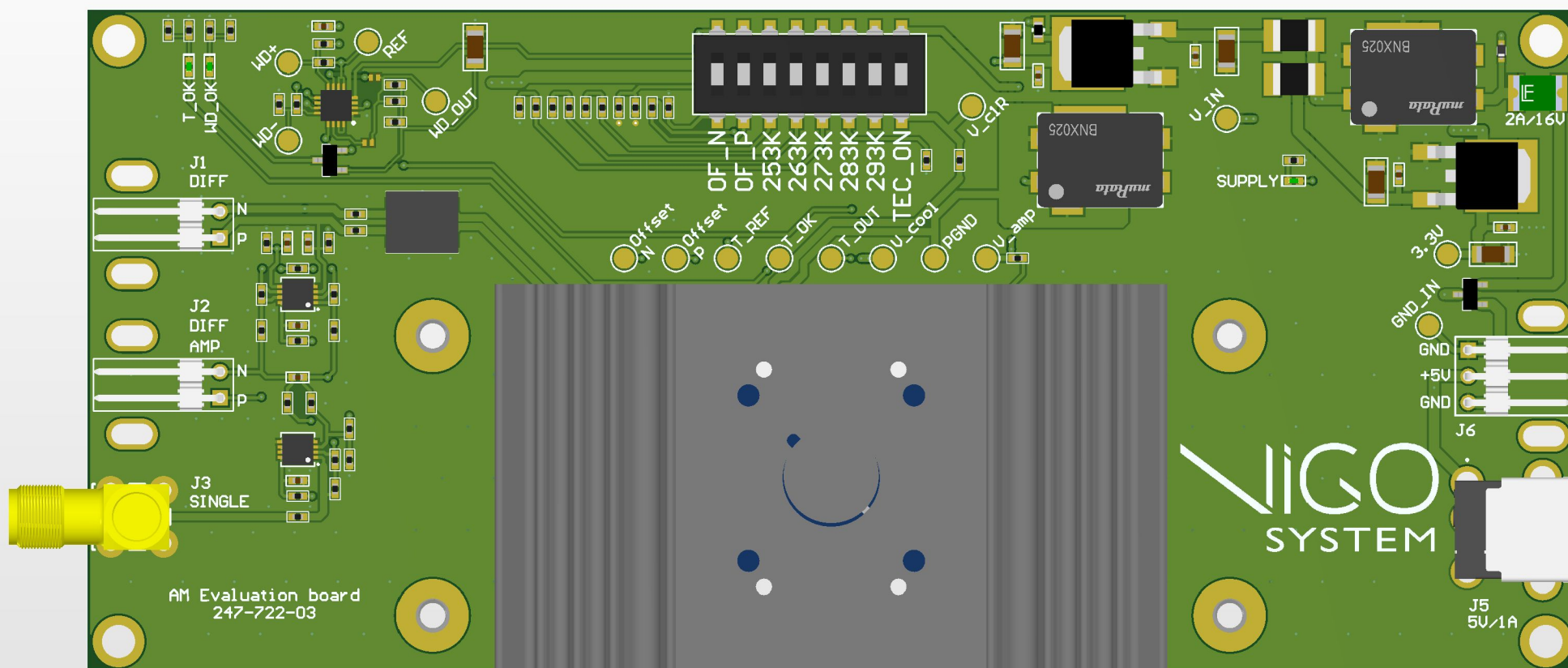


|              |                          |                                   |            |
|--------------|--------------------------|-----------------------------------|------------|
| Title:       | Window detector          |                                   |            |
| Project:     | 247-722-03-public.PrjPcb |                                   |            |
| Modified by: | Paweł Sałek              | Date:                             | 04.01.2022 |
| Size:        | A4                       | 247-722-03 Window detector.SchDoc |            |

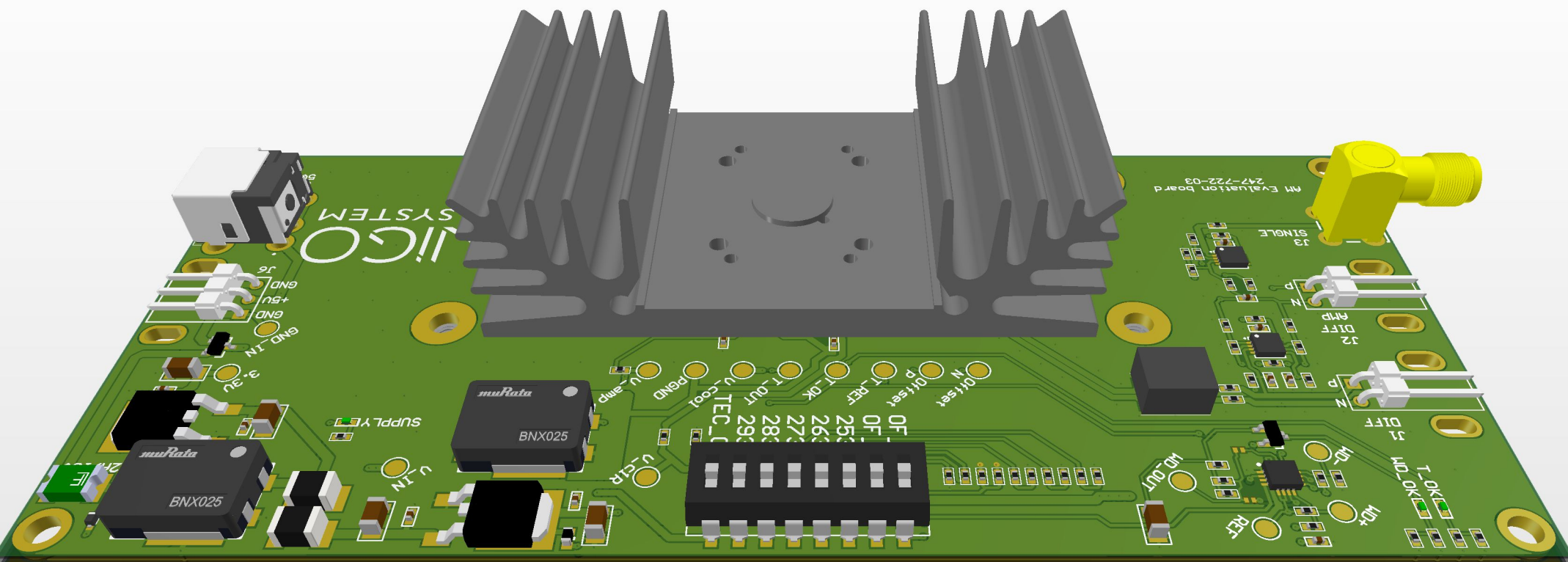


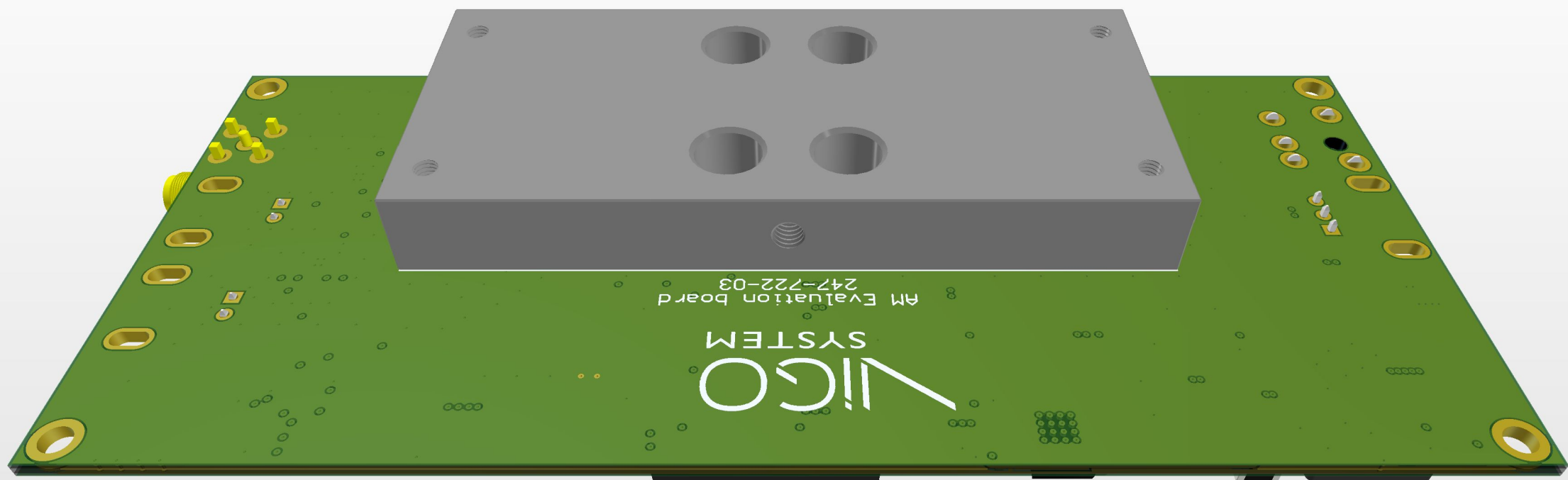
|              |                          |                                      |            |
|--------------|--------------------------|--------------------------------------|------------|
| Title:       | Temperature choice       |                                      |            |
| Project:     | 247-722-03-public.PrjPcb |                                      |            |
| Modified by: | Paweł Sałek              | Date:                                | 04.01.2022 |
| Size:        | A4                       | 247-722-03 Temperature choice.SchDoc |            |

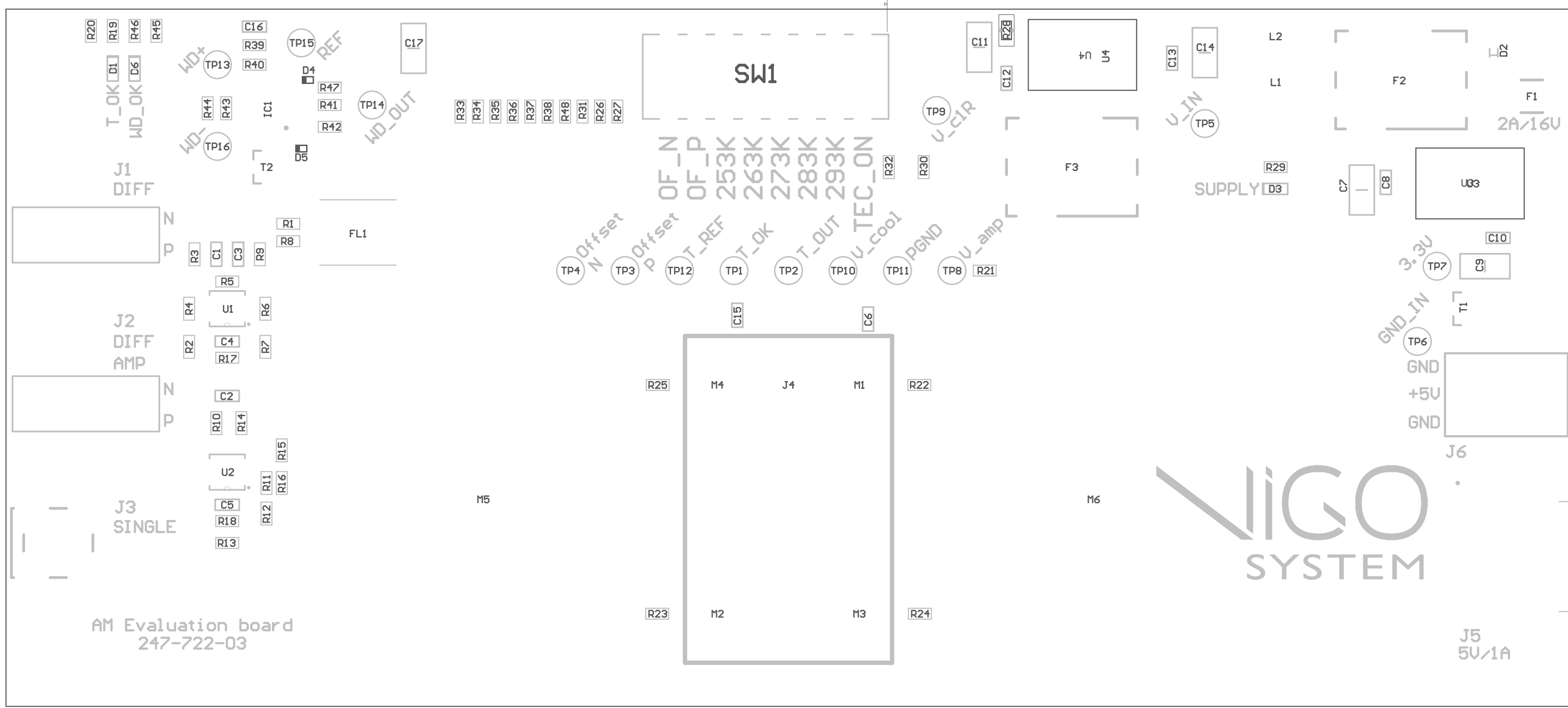












| Name               | Designator  | Quantity | Manufacturer 1           | Manufacturer Part Number 1 |
|--------------------|---|----------|--------------------------|----------------------------|
| OR                 | R1, R2, R7, R8, R21, R22, R23, R24, R25, R26, R27 | 11       | Yageo                    | RC0402JR-070RL             |
| 1PS10SB82          | D4, D5  | 2        | Nexperia                 | 1PS10SB82,315              |
| 2k                 | R19, R20, R29, R37, R41, R45, R46, R47            | 8        | Yageo                    | RC0402FR-132KL             |
| 2.2k               | R15   | 1        | Yageo                    | RT0402BRD072K2L            |
| 2.5x5.5mm          | J5  | 1        | CUI Devices              | PJ-079BH                   |
| 2.6A/16V           | F1  | 1        | Littelfuse               | MINISMDC260F/16-2          |
| 3-1478978-1        | J3  | 1        | TE Connectivity          | 3-1478978-1                |
| 3V3                | U3, U4  | 2        | Diodes                   | AZ1084CD-3.3TRG1           |
| 4k7                | R31, R32, R35                                     | 3        | Royal Electronic Factory | 0402WGF4701TCE             |
| 7k5                | R34, R48  | 2        | Royal Electronic Factory | 0402WGF7501TCE             |
| 10k                | R36, R39, R44                                     | 3        | Royal Electronic Factory | 0402WGJ0103TCE             |
| 10p                | C1, C3  | 2        | Samsung                  | CL05C100CB5NNNC            |
| 10R                | R17, R18  | 2        | Royal Electronic Factory | 0402WGF100JTCE             |
| 22R                | R40, R43  | 2        | Royal Electronic Factory | 0402WGF220JTCE             |
| 22u/25V            | C7, C9, C11, C14, C17                             | 5        | Samsung                  | CL31A226KAHNNWE            |
| 33k                | R38, R42  | 2        | Royal Electronic Factory | 0402WGF3302TCE             |
| 49R9               | R3, R5, R9, R10, R13, R14                         | 6        | Yageo                    | RC0402FR-7D49R9L           |
| 56R@10MHz 10A      | L1, L2  | 2        | Laird                    | HI1612X560R-10             |
| 100m               | R30   | 1        | Yageo                    | RL0402FR-070R1L            |
| 100n/35V           | C4, C5, C6, C8, C10, C12, C13, C15, C16           | 9        | Taiyo                    | GMK105BJ104KV-F            |
| 100R               | R4, R6, R11, R12                                  | 4        | Yageo                    | RT0402BRD07100RL           |
| 101R014FB110       | J4  | 1        | Amphenol                 | 101R014FB110               |
| 220R               | R16   | 1        | Yageo                    | RT0402BRD07220RL           |
| 390R               | R33   | 1        | Yageo                    | RC0402FR-13390RL           |
| 68016-403HLF       | J6  | 1        | Amphenol ICC / FCI       | 68016-403HLF               |
| 10129379-902004BLF | J1, J2  | 2        | Amphenol ICC / FCI       | 10129379-902004BLF         |
| 9774010943R        | M1, M2, M3, M4                                    | 4        | Würth Electronics        | 9774010943R                |
| 9774025243R        | M5, M6  | 2        | Würth Electronics        | 9774025243R                |
| A6SN-8104-P        | SW1   | 1        | Omron                    | A6SN-8104-P                |
| ADA4896-2ACPZ      | U1, U2  | 2        | Analog Devices           | ADA4896-2ACPZ-R2           |
| BNX025H01L         | F2, F3  | 2        | Murata                   | BNX025H01L                 |
| ESDA12-1K          | D2  | 1        | STMicroelectronics       | ESDA12-1K                  |
| PA4339.132NLT      | FL1   | 1        | Pulse                    | PA4339.132NLT              |
| Si2319CDS          | T1, T2  | 2        | Vishay                   | SI2319DDS-T1-GE3           |
| SUPPLY             | D3  | 1        | Kingbright               | KPG-1005CGC-TT             |
| T_OK               | D1  | 1        | Kingbright               | KPG-1005CGC-TT             |
| TSX564IQ4T         | IC1   | 1        | STMicroelectronics       | TSX564IQ4T                 |
| WD_OK              | D6  | 1        | Kingbright               | KPG-1005CGC-TT             |