

Base mounting system

FEATURES

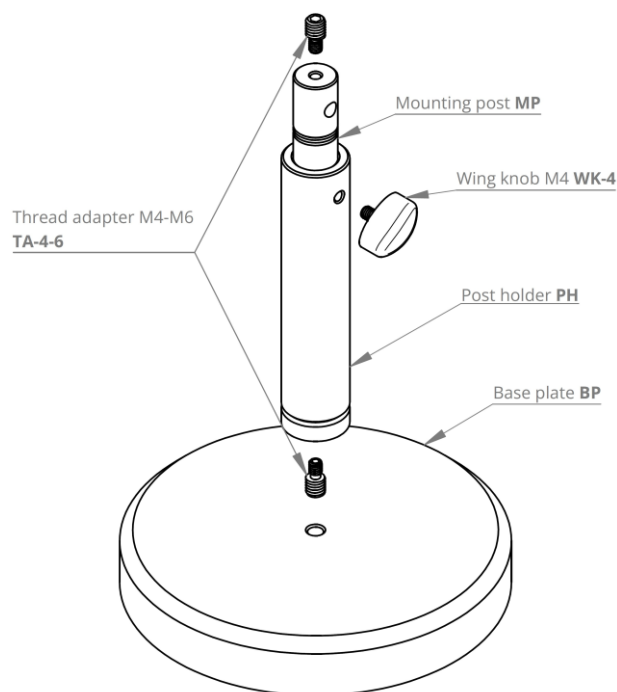
- Dedicated to VIGO detection modules with M4 mounting hole
- Adjustable height
- Compatible with M6 optical breadboards

DRB-2 PARTS

- Post holder: PH
 - Made of black anodized aluminium
 - Equipped with wing knob WK-4
 - Weight: ~60 g
- Mounting post: MP
 - Made of stainless steel
 - Equipped with two threaded adapters TA-4-6
 - Weight: ~115 g
- Base plate: BP
 - Made of black, lacquered steel
 - Provides mechanical stable conditions for the mounting system
 - Weight: ~1756 g

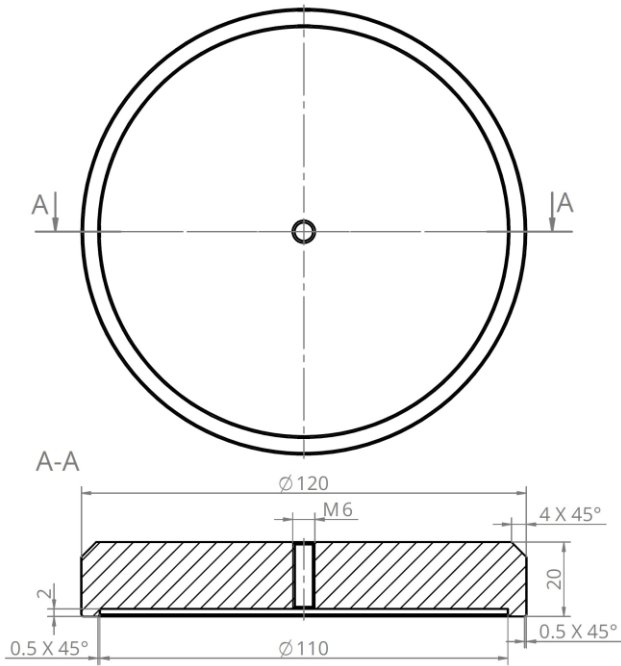
COMPATIBLE ACCESSORIES

- [MH-1](#) module holder
- [DH-2](#) detector holder

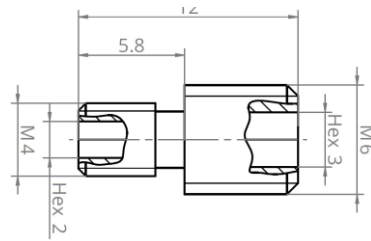


MECHANICAL LAYOUT (Unit: mm)

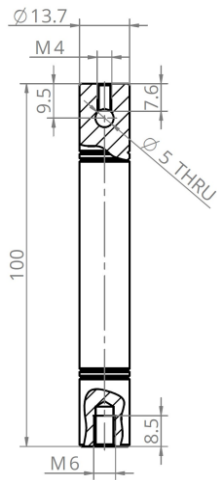
BASE PLATE: BP



THREADED ADAPTER: TA-4-6



MOUNTING POST: MP



POST HOLDER: PH

